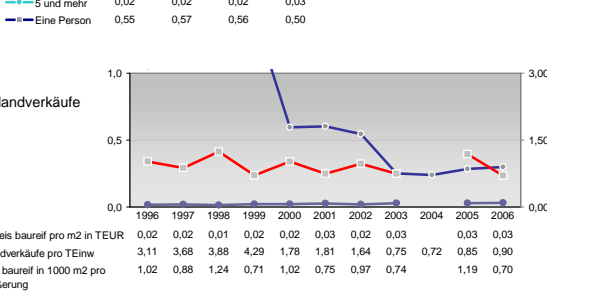
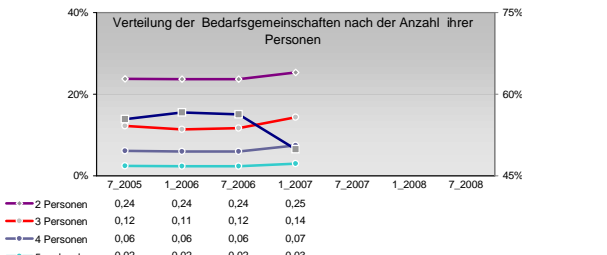
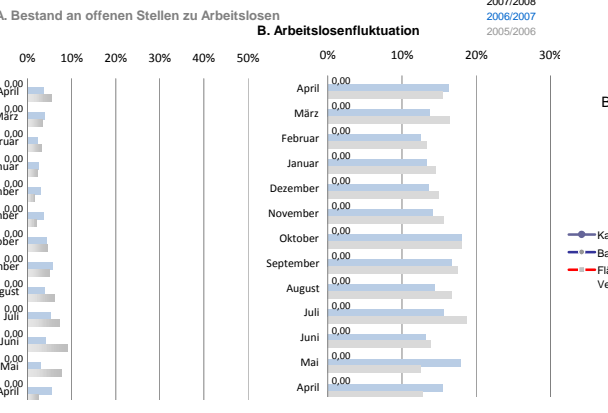
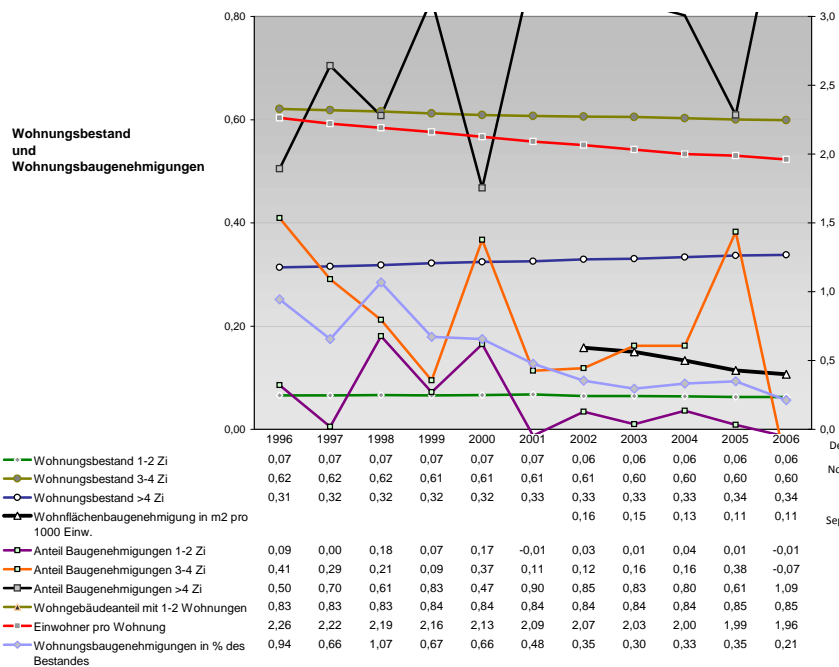
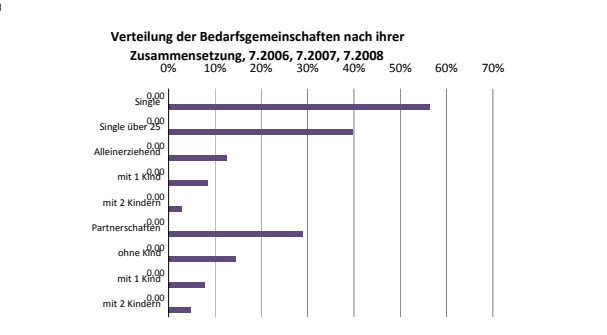
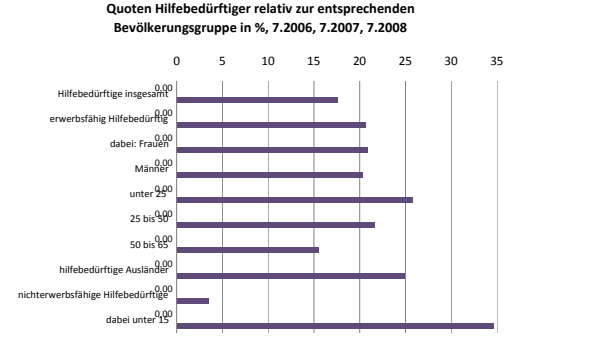
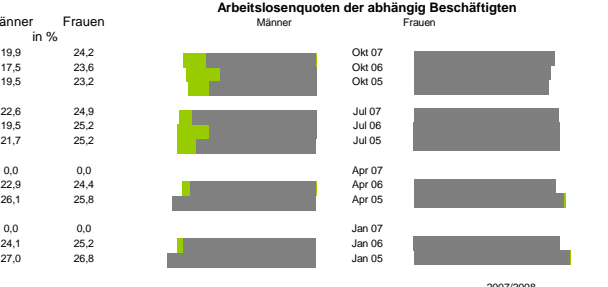
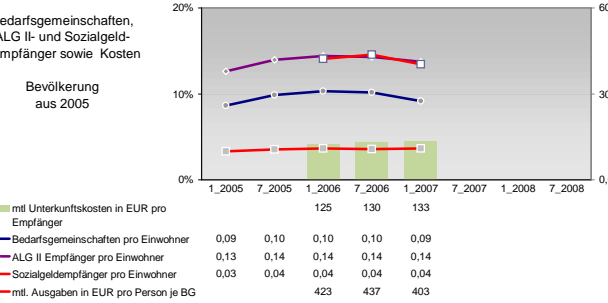
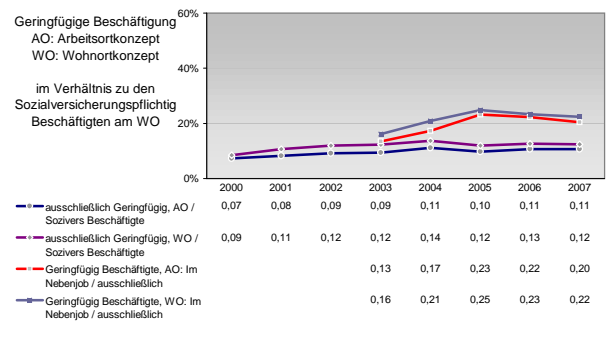


	1996	1997	1998	1999	2000	2001	2002	2003	2004	2005	2006
Selbständige in %	8,66	8,15	8,51	8,48	8,60	8,84	9,52	10,19	10,38	10,85	
Arbeitslosigkeit w in %			26,93	28,62	28,30	28,20	26,45	26,98	26,36	25,20	24,63
Arbeitslosigkeit m in %			20,36	19,78	19,78	20,76	22,50	24,39	23,91	23,30	20,93



Einblicke in städtische Kundenrefinanzierungs- und Zinsüberschuss
 Relationen der Bankenwirtschaft erhalten Sie auch mit den Seiten:
<http://www.rankingweb.de/Banken.html>
<http://www.rankingweb.de/stadt.html>